

Change is Coming



**“Every success story is a tale
of constant adaptation,
revision and change.”**

Richard Branson



Speckle Park

Efficiency and quality have never been more important to the beef industry.

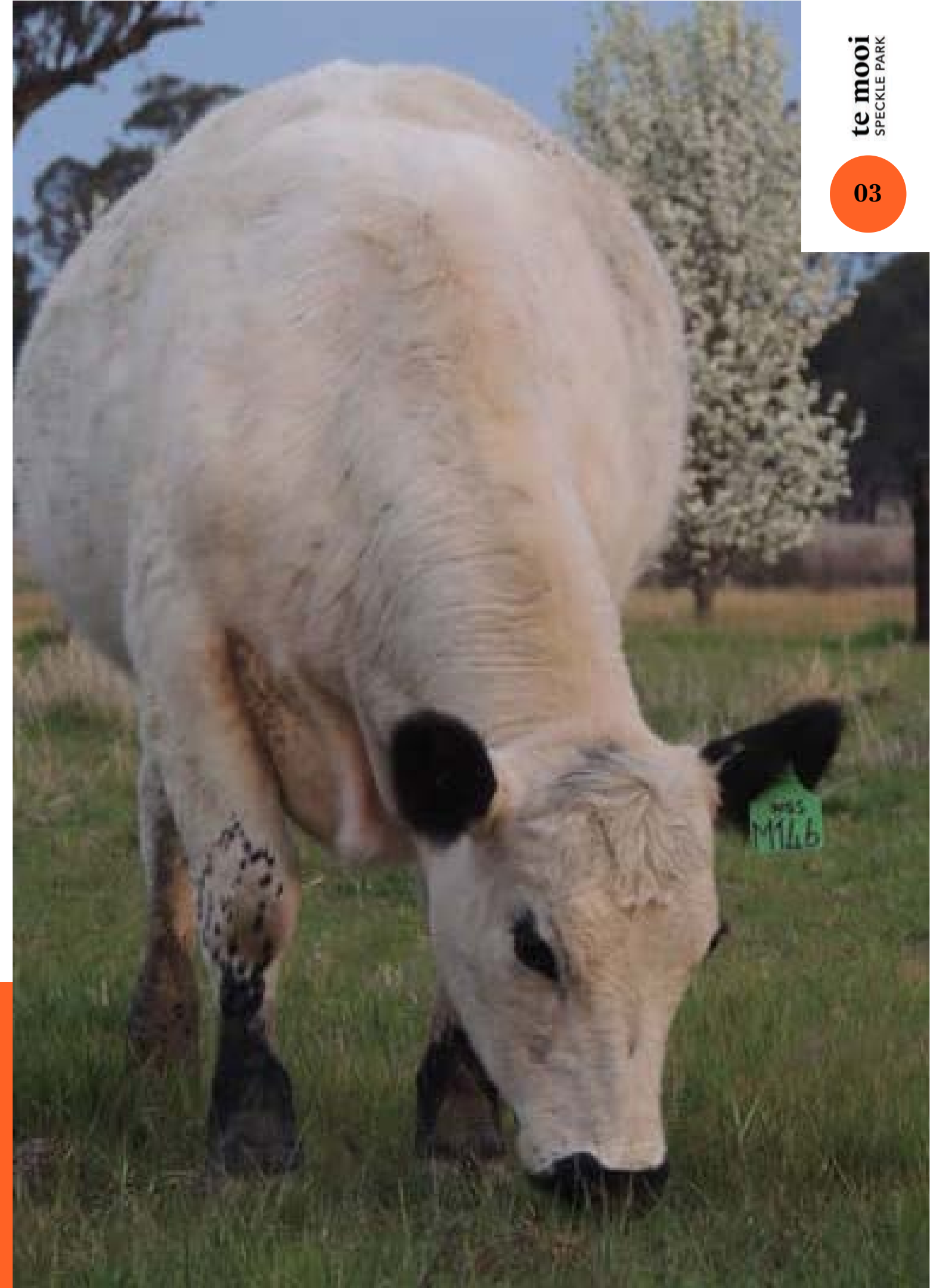
Speckle Park improve feed efficiency, yields and consistently produce high quality MSA graded carcasses.


Quality

Producers and processors across the country are recognising the value that Speckle Park bring, and the demand is only going to grow as we all try and minimise our inputs and maximise our output.

The days of dismissing Speckle Park as just a quirky coloured beast that has nothing significant to add to the commercial producer, or they are for the hobby farmer and show ring junkies are gone.

They are the real deal.




A photograph of three speckle park calves standing in a grassy field. The calves have white bodies with black speckles and black faces. They are looking towards the camera. The background is a blurred green field under a bright sky.

**I couldn't believe the carcasses on them, the meat yields
- and therefore the value of the Speckle Park.
They far outperformed other, more traditional breeds.**

Dennis Power
Minnamurra Pastoral Company

Premium Pricing

At the beginning of December 2019, Speckle Park-cross steers turned heads when they were the top two lots at the Naracoorte weaner steer sale where 4500 head were presented.



The James family, Lucindale, offered both lots of 7 to 8 month old steers with the tops selling for \$1,640 (391kg - \$4.19/kg). The seconds made \$1,610 (347 kgs - \$4.63/kg). The similar weight angus steers made from \$3.18 to \$3.61/kg.

The dollar per kilogram premium was paid by Thomas Foods International and the steers made their way to their Iranda feedlot.

A close-up photograph of a steer's head, showing its eye and part of its snout. The image is dark and moody, with a semi-transparent dark grey overlay covering the middle section where the text is located. The text is in a bright orange color.

The steers as a whole perform well throughout their feeding time and fit comfortably into our JBS-programmed grain fed business.

Whilst the breed seems to be in its infancy in Australia, numbers wise, going forward they will become more popular because of their performance and suitability.

Scott Carswell

JBS

In Demand

Speckle Park-cross also topped the British-bred heifer section of the 4200-head Wodonga Blue Ribbon Weaner Sale in January 2020.

Two lots were offered by Munt Family Pastoral and both were purchased by JBS Australia.

JBS Australia Livestock Manager Feedlots, Scott Carswell, Toowoomba, QLD, said JBS regularly purchased Speckle Park steers throughout its five feed yards in eastern Australia.



Feedlots and processors are paying premium prices because Speckle Park perform. They are efficient feed converters, achieve very high yields and produce high quality carcasses.

Case 1

A group of Speckle Park-cross heifers went through the Conargo feedlot at Deniliquin, gaining 2.18kg/day with a feed conversion ratio of 4.72.

Case 2

A group of purebred Speckle Park heifers went through Dalby feedlot where they put on 2.11 kg/day at the phenomenal feed conversion of 3.93.

Case 3

Birchmore Commercial Crossbreds fed a line of Speckle Park/Droughtmater cross steers alongside a line of straight Droughtmaster steers.

The Speckle Park cross gained 15% more weight under the same conditions resulting in more than a \$100 premium per head.

Case 4

Minnamurra Pastoral was successful in 2019 for the fourth year in a row at the Royal Queensland Show “Paddock to Palate” feedback competition taking out carcase awards with their Speckle Park x Angus steers. They won the Highest Individual Index Score with their 70-day trade team, who also won the MSA Meat Eating Quality Award.

Case 5

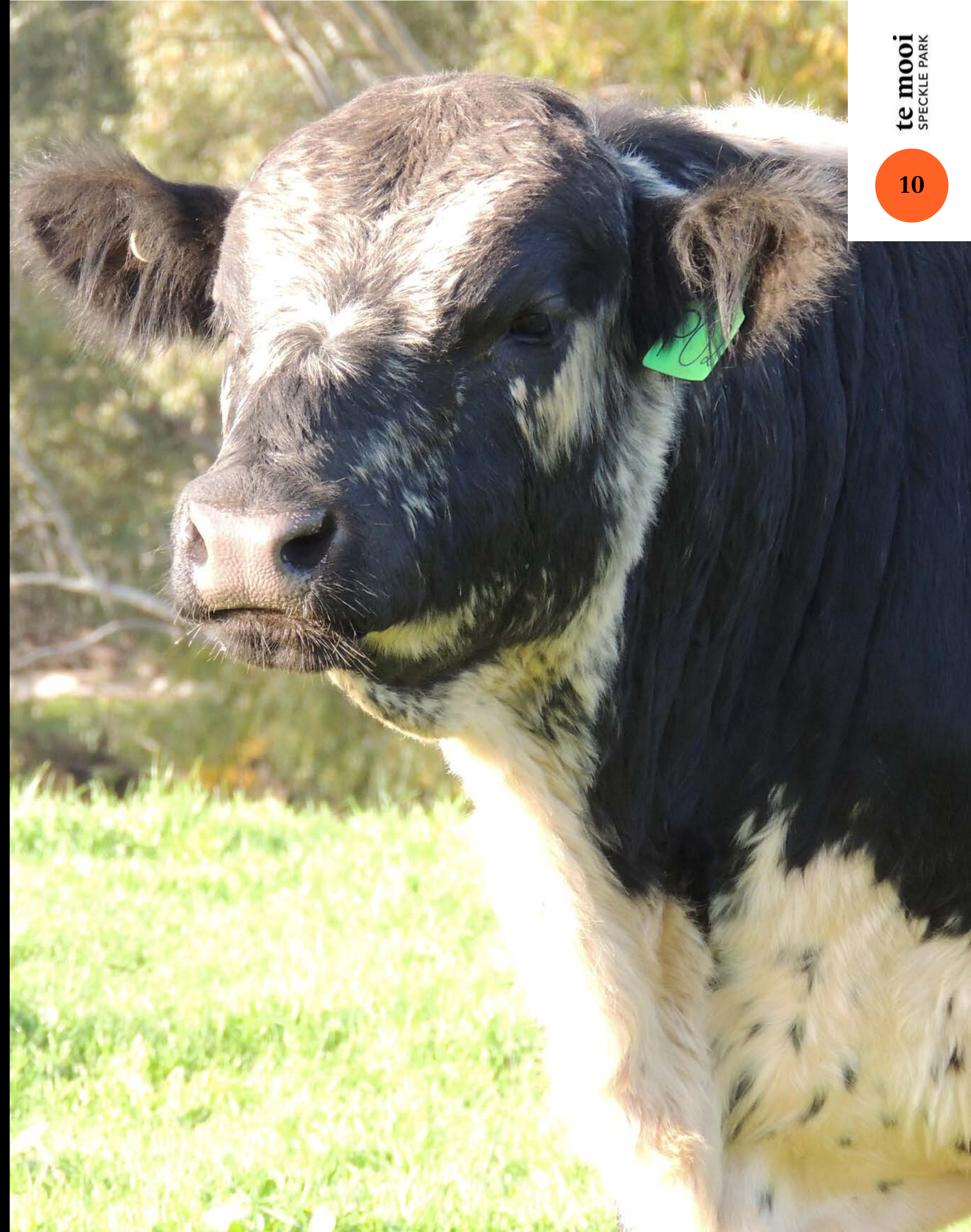
148 Speckle Park x Angus cross steers went through Oakey abattoirs. All bar one had milk teeth. Carcase weight was 347.4 kg with an average dressing percentage of 58%. 100% were MSA graded, there were no dark cutters, average fat cover was 13.7mm and they marbled up to 5, with 70% marble score 2 or above.

Case 6

A group of purebred Speckle Park steers were processed in November 2019. Average HSCW - 275 kg, All 0 dentition, 5 to 17mm of fat (ave 10mm), 87% B Muscle Score.

What was impressive about these steers was their consistency, the size of their eye muscle and the marbling they achieved, in spite of being so young and with no HGP pellets implanted. I am very happy with this Speckle Park cross.

Berry Reynolds
Mort & Co.





**better beef,
bigger profits**





**Strive not to be a success,
but rather to be of value.**

Albert Einstein

About us

Te Mooi Speckle Park is a commercially focused breeding program. Our primary areas of focus are fertility, calving ease, structure and temperament.

All our donor cows calved at two, unassisted. All went in calf on their first AI, and all have been independently structurally assessed and are either 1 or 2 temperament scores. Our sire lineup is second to none. The top performers for growth, EMA and IMF% in the breed are all in use.

Our aim is to contribute significantly to our clients' bottom line by supplying the finest Speckle Park genetics on the planet.

How we work

A.

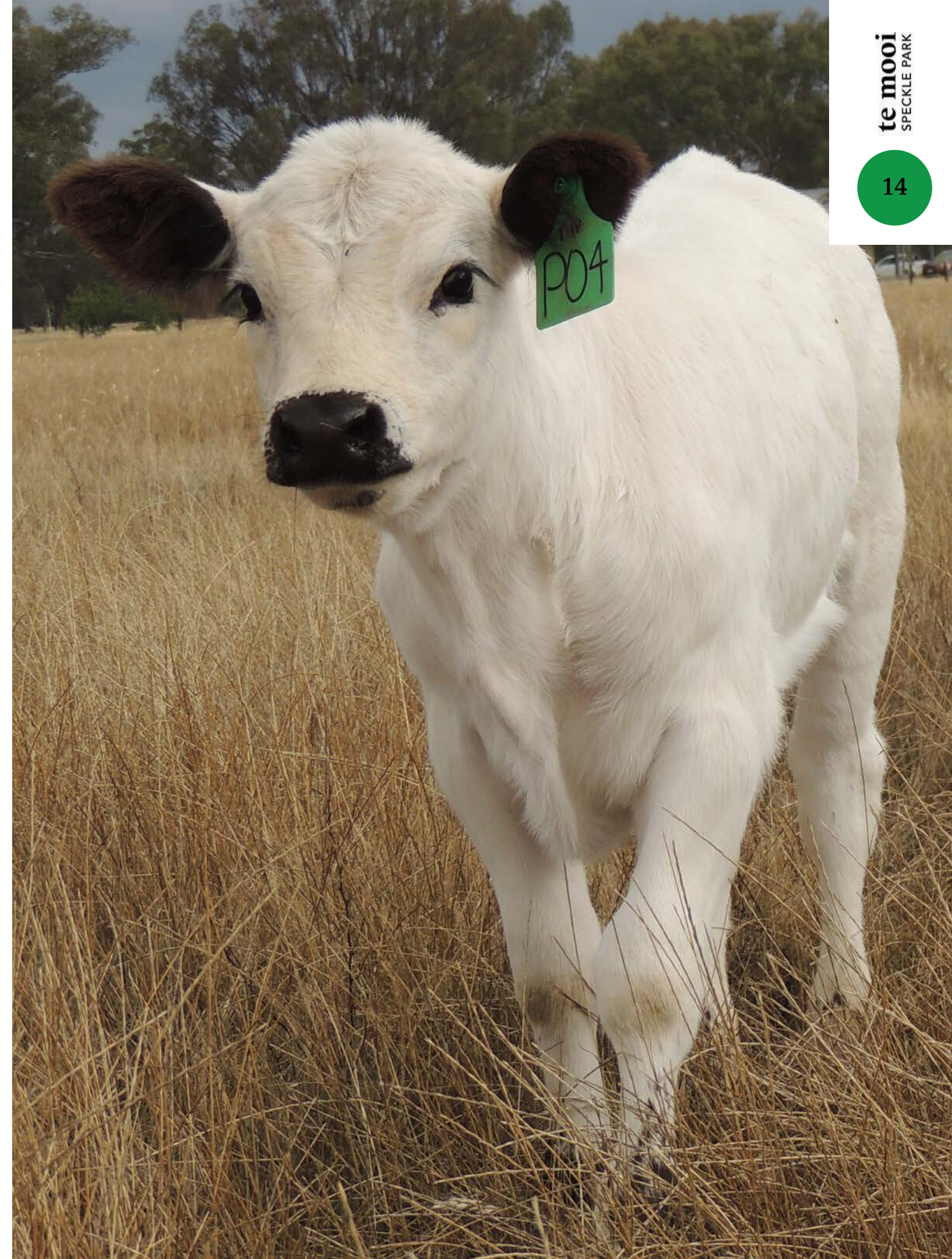
We stand behind what we sell. The more value you get from our program, the more likely you are to be a repeat buyer. That's our goal, not a one off, but a long term beneficial relationship.

B.

Fertility and structure are the foundation of maternal strength and great sires come from great females. Te Mooi is built on Cow Power!

C.

If you can measure it you can improve it. We record all we can so we continue to improve and can deliver repeatable quality to our clients.



Bulls Available



**Te Mooi currently have working age
bulls available for private treaty sale.
Enquiry and inspections welcome.**



te mooi
PROPHECY

te mooi PROPHECY



PROPHECY is a son of the renown sire *Codiak Oh My Gosh*. Codiak Oh My Gosh is a herd sire at Codiak Acres and River Hill Farm in Canada.

Oh My Gosh was the sale topper at the Summit 3 sale in 2015, and he also produced the sale topper at the same sale in 2017. He is out of one of the best cows in the breed, *Codiak Unique 8R*. Semen in Australia has sold up to \$400 per straw

The dam of PROPHECY is a daughter of the Melbourne Show Supreme Exhibit *Champagne Codiak Pink* and she is a moderate, deep sided, maternal female.

Pedigree

Clear View Ty
Codiak Oh My Gosh
Codiak Unique 8R

Champagne Tycoon II
Champagne Pink Poppy
Champagne Codiak Pink

- Pedigree Assured
- Homozgous Polled
- Red Gene Free
- NT821 Free

te moo*i*
PROPHECY

PROPHECY reflects our focus on female families as he combines one of Canada's most prolific families with one of Australia's most awarded females. He is a heifer's first calf, arrived unassisted and, despite a tough season, has done well without supplementary feeding.

He is deep, soft and has plenty of growth. He also has a great disposition and sound structure.

June 2020 Breedplan figures

Gestation Length	Birth Weight	200-day Weight	400-day Weight	600-day Weight	Mat Cow Weight	Milk (kg)	Scrotal Size	Carcase Wt (kg)	Eye Muscle Area	Rib Fat	Rump Fat	Retail Beef Yield	IMF (%)
-0.6	+0.7	+13	+14	+18	+15	-	-0.7	+12	+0.3	+0.2	+0.2	-0.1	+0.0



Codiak Oh My Gosh



Champagne Codiak Pink



Codiak Unique 8R

A black and white speckled cow, likely a Friesian, stands in a lush green field. The cow has a black head and neck, with white speckles on its body. It is facing left, and a green ear tag is visible on its left ear. The background consists of a dense line of trees with green foliage. The lighting is bright, suggesting a sunny day.

te mooi
POSEIDON

te mooi POSEIDON



Pedigree

A & R 15R
SPKNZ Falcon
Codiack Teressa GNK 12T

Codiack Putnam 61Y
Wattle Grove 61Y Amanda M146
Codiack Amanda GNK 42Y

- Pedigree Assured
- Homozgous Polled
- Red Gene Free
- NT821 Free

POSEIDON is a stylish well-made individual with good growth, great carcase and is especially strong when it comes to IMF%.

His sire *SPKNZ Falcon* is renown for producing great feet and high marbling, and POSEIDON doesn't let the team down. *Falcon* has been used extensively in New Zealand but there are only a handful of his sons in Australia

Poseidon's dam *Amanda M146* is a full sister to the \$22,000 top selling bull at the 2017 Wattle Grove Sale, and she is a half-sister to the top selling bull (\$17,000) at the 2020 Scone Speckle Park sale. This is one of the most prolific families in the Speckle Park breed. *Amanda M146* is a daughter of the renown *Codiak Putnam*, widely known for quality progeny.

te mooi
POSEIDON

POSEIDON was a heifer's first calf and arrived unassisted. He is suitable for heifers and should produce good growth, tremendous carcass, and leave quality replacement females. POSEIDON's great grand dam *Codiak Unique 8R* is the number one female in the breed for IMF%. POSEIDON is a well fleshed individual and is in the top 5% of the breed for IMF%.

June 2020 Breedplan figures

Gestation Length	Birth Weight	200-day Weight	400-day Weight	600-day Weight	Mat Cow Weight	Milk (kg)	Scrotal Size	Carcass Wt (kg)	Eye Muscle Area	Rib Fat	Rump Fat	Retail Beef Yield	IMF (%)
+0.7	+1.3	+9	+17	+29	+35	0	-0.1	+14	+0.6	+1.4	+1.8	-1.1	+0.8

Top 5% of Breed Top 20% of Breed



Codiak Putnam 61Y



Wattle Grove Amanda M146



SPKNZ Falcon



te mooi
PREDATOR

te mooi PREDATOR



Pedigree

A & R 15R
SPKNZ Falcon
Codiack Teresa GNK 12T

Codiack GNK 24X
Kamarah Mozzie
Codiack Good Golly GNK 11U

- Pedigree Assured
- Hetrozgous Polled
- Red Gene Free
- NT821 Free

PREDATOR has been a standout since birth. He is by the leading IMF% sire SPKNZ Falcon and is from a wonderful sire producing family. He is structurally sound, has a great temperament and exhibits tremendous growth.

Predator's sire SPKNZ Falcon is a stalwart in New Zealand leading herd Maungahina leaving both elite females and herd sires. Not only does he produce great structure he brings tremendous muscle and breed leading marbling.

te mooi
PREDATOR

Predator is out of Kamarah Mozzie who is one of our favorite donors. She is feminine with great muscle expression, very sound structure and she comes from a tremendous dam line. She is a half sister to the Sydney Show Champions Wattle Grove Smoke And Mirrors and Wattle Grove Codiak Magic as well as the Agribition Champion Codiak Attitudenous. Her dam Codiak Good Golly is also a half sister to the highly regarded herd sire Mainstream Eldorado. PREDATOR combines all the carcass quality of his pedigree.

June 2020 Breedplan figures

Gestation Length	Birth Weight	200-day Weight	400-day Weight	600-day Weight	Mat Cow Weight	Milk (kg)	Scrotal Size	Carcase Wt (kg)	Eye Muscle Area	Rib Fat	Rump Fat	Retail Beef Yield	IMF (%)
+1.1	+2.2	+9	+13	+24	+28	0	+0.4	+10	+0.8	+1.1	+1.3	-0.6	+0.7

Top 20% of Breed



Wattle Grove Smoke
and Mirrors



Kamarah Mozzie M4



SPKNZ Falcon



te mooi
QUANTUM Q1

te mooi

QUANTUM Q1



QUANTUM Q1 is a son of the breeds leading growth and carcass sire *Minnamurra Leander L81*. Leander is the number one bull in the breed for 400 day weight, 600 day weight and carcass weight as well as being in the top 1% for EMA and top 10% for IMF%

QUANTUM Q1 was only 33 kilograms born exhibits tremendous length, great muscle and a slightly later maturity pattern. He is easy moving, has a great temperament and comes from an incredible female family.

Pedigree

Six Star Royal Flesh 101Y
Minnamurra Leander L81
Minnamurra 60WNice Lady G8

Codiak Putnam 61Y
Wattle Grove 61Y Amanda M146
Codiak Amanda GNK 42Y

- Pedigree Assured
- Homozgous Polled
- Red Gene Free
- NT821 Free

te mooi

QUANTUM Q1

QUANTUM Q1 is out of the wonderful matron *Wattle Grove 61Y Amanda M146*. She is deep, thick and has great structure. Amanda M146 calved unassisted at 2yo and has been selected in our donor program. Her dam and grandam are two of the most important females in the breed.

QUANTUM Q1 is in the top 5% of the breed for 400 and 600 day weight as well as being in the top 15% of the breed for both EMA and IMF%. He is a well balanced all rounder who would be an asset to any herd.

June 2020 Breedplan figures

Gestation Length	Birth Weight	200-day Weight	400-day Weight	600-day Weight	Mat Cow Weight	Milk (kg)	Scrotal Size	Carcase Wt (kg)	Eye Muscle Area	Rib Fat	Rump Fat	Retail Beef Yield	IMF (%)
+0.2	+2.9	+23	+36	+51	+56	0	+0.4	+30	+1.1	+0.8	+1.0	-0.3	+0.4

Top 5% of Breed

Top 20% of Breed



Codiak Putnam 61Y



Wattle Grove Amanda M146



Minnamurra Leander L81



te mooi
QUACKER
JACK Q5

te mooi

QUACKER JACK Q5



QUACKER JACK Q1 is a son of the breed-leading growth and carcass sire *Minnamurra Leander L81*.

Leander is the number one bull in the breed for 400 day weight, 600 day weight and carcass weight as well as being in the top 1% for EMA and top 10% for IMF%

QUACKER JACK Q5 is out of a daughter of the renowned Agribition Champion Star Bank King George and comes from the family of the great herd sires Codiak Hamlet and Codiak Sailor Boy tracing back to the famous Leigh-Al-Ann herd.

Pedigree

Six Star Royal Flesh 101Y
Minnamurra Leander L81
Minnamurra 60WNice Lady G8

Star Bank King George 82U
Champagne Fluffy Duck
Codiak Bad Duckling

- Pedigree Assured
- Homozgous Polled
- Red Gene Free
- NT821 Free

te mooi
**QUACKER
JACK Q5**

QUACKER JACK Q5 is a long, balanced, very well-muscled bull. This is hardly surprising given the quality of his pedigree. *Minnamurra Leander L81* is the breed's most powerful growth and carcass bull, and *Champagne Daisy Duck* comes from a strong maternal family.

QUACKER JACK Q5 is in the top 10% of the breed for Scrotal Size, is in the top 20% of the breed for all growth traits as well as for EMA and IMF%. He is a well-balanced all-rounder who would suit any program.

June 2020 Breedplan figures

Gestation Length	Birth Weight	200-day Weight	400-day Weight	600-day Weight	Mat Cow Weight	Milk (kg)	Scrotal Size	Carcass Wt (kg)	Eye Muscle Area	Rib Fat	Rump Fat	Retail Beef Yield	IMF (%)
+0.2	+2.3	+20	+28	+42	+46	0	+0.6	+25	+1.1	+0.5	+0.5	+0.1	+0.4

Top 20% of Breed



Star Bank King George



Codiak Bad Duckling



Minnamurra Leander L81

**To hell with circumstances;
I create opportunities.**

Bruce Lee





Semen Interests

All bulls are sold with full physical ownership. Te Mooi retain the semen marketing rights and 20% of nett future proceeds to protect the marketing of our genetics. This leaves 80% of the nett future proceeds to the purchaser.

With our experience and connections we are best placed to promote Te Mooi genetics to the benefit of the purchaser. At this point in time semen sales are minimal, but circumstances change and we are best placed to move quickly and take advantage on the purchasers behalf of future opportunities. If a purchaser wishes to hold 100% of the semen rights we are happy to enter negotiations.

In all circumstances Te Mooi retain the right to collect 500 straws of semen for use in the Te Mooi herd and in our Carcase Crew Program.



Contact us

Email

paul@heritagebloodstock.com.au

Contact number

+61 0418 356 864

Website

www.temooi.com.au